



# Quick Start Guide

The essentials of Imaging

[www.minolta.com](http://www.minolta.com)

## Pi3505e Printer Controller

---

# Contents

## 1 Before Using the Printer Driver

<b>1.1</b>	<b>Features of the Controller and Printer Driver</b>	<b>1-1</b>
<b>1.2</b>	<b>Various Printing Functions</b>	<b>1-2</b>
<b>1.3</b>	<b>Configuration</b>	<b>1-5</b>
<b>1.4</b>	<b>General Guide</b>	<b>1-6</b>
	LED indicators	1-7
<b>1.5</b>	<b>Connecting the Machine to a Computer</b>	<b>1-7</b>
	Connecting directly to a computer with a USB cable	1-7
	Connecting to a network with a LAN cable	1-8
<b>1.6</b>	<b>Settings Made on the Machine</b>	<b>1-9</b>
	Priority Device	1-9
<b>1.7</b>	<b>Printer Drivers</b>	<b>1-10</b>

## 2 Installing a Windows Printer Driver

<b>2.1</b>	<b>Windows 98 or Me</b>	<b>2-1</b>
	Operating Environment	2-1
	Installing a Windows 98/Me Printer Driver	2-2
	Making General Settings Before Using the Printer	2-3
<b>2.2</b>	<b>Windows 2000/XP</b>	<b>2-4</b>
	Operating Environment	2-4
	Installing a Windows 2000/XP Printer Driver	2-4
	Making General Settings Before Using the Printer	2-5
<b>2.3</b>	<b>Windows NT 4.0</b>	<b>2-7</b>
	Operating Environment	2-7
	Installing a Windows NT 4.0 Printer Driver	2-7
	Making General Settings Before Using the Printer	2-9
<b>2.4</b>	<b>Installation through Plug and Play</b>	<b>2-10</b>
	Connecting the USB Cable	2-10
<b>2.5</b>	<b>Uninstalling a Windows Printer Driver</b>	<b>2-11</b>

## 3 Network Settings

<b>3.1</b>	<b>Introduction</b>	<b>3-1</b>
<b>3.2</b>	<b>Specifying the IP Address From the Copier's Touch Panel</b>	<b>3-2</b>
	Setting procedure	3-2

<b>3.3</b>	<b>Peer-to-Peer Printing.....</b>	<b>3-4</b>
<b>3.4</b>	<b>LPR Printing.....</b>	<b>3-5</b>
	Requirements .....	3-5
	Configuration Procedure (Windows NT 4.0).....	3-5
	Installing the printer (Windows NT 4.0) .....	3-6
	Configuration Procedure (Windows 2000/XP).....	3-7
	Installing the printer (Windows 2000/XP) .....	3-7
<b>3.5</b>	<b>Windows Printing .....</b>	<b>3-9</b>
	Requirements .....	3-9
<b>3.6</b>	<b>IPP Printing .....</b>	<b>3-9</b>
	Requirements .....	3-9
<b>3.7</b>	<b>NetWare Printing .....</b>	<b>3-10</b>
	Configuring Print Settings on a PC Used for Printing .....	3-10
<b>3.8</b>	<b>Using PageScope Light .....</b>	<b>3-11</b>
	Accessing PageScope Light.....	3-11
	Example: With Internet Explorer 6.....	3-11
	Using PageScope Light.....	3-11
	Logging in to the Admin mode.....	3-12
	Selecting the display language.....	3-13

## **4 Configuring PCL Printer Driver Properties for Windows**

<b>4.1</b>	<b>Using PCL Printer Driver Properties Tabs .....</b>	<b>4-1</b>
------------	---	------------

## **5 Troubleshooting**

<b>5.1</b>	<b>Unable to Print.....</b>	<b>5-1</b>
<b>5.2</b>	<b>Unable to Make Correct Settings / Unable to Print Exactly as Set.....</b>	<b>5-2</b>

---

# User Instructions

## For the U.S.A. Users

### FCC Part 15-Radio Frequency Devices

This device complies with Part 15 of the FCC Rules. Operation is subject to the following two conditions: (1) This device may not cause harmful interference, and (2) this device must accept any interference received, including interference that may cause undesired operation.

#### NOTE

This equipment has been tested and found to comply with the limits for a Class A digital device, pursuant to Part 15 of the FCC Rules. These limits are designed to provide reasonable protection against harmful interference when the equipment is operated in a commercial environment. This equipment generates, uses, and radiates radio frequency energy and if not installed and used in accordance with the instruction manual, may cause harmful interference to radio communications.

Operation of this equipment in a residential area is likely to cause harmful interference in which case the user will be required to correct the interference at his own expense.

#### WARNING

The design and production of this unit conform to FCC Regulations, and any changes or modifications must be registered with the FCC and are subject to FCC control. Any changes made by purchaser or user without first contacting the manufacturer will be subject to penalty under FCC regulations.

FCC-F02

This device must be used with shielded interface cables. The use of non-shielded cables is likely to result in interference with radio communications and is prohibited under FCC rules.

## For Canada Users

### Interference-Causing Equipment Standard (ICES-003 Issue 3)

This Class A digital apparatus complied with Canadian ICES-003  
Cet appareil numérique de la classe A est conforme à la norme NMB-003 du Canada.

IC-F03

## For European Users

### CE Marking (Declaration of Conformity)

This product complies with the following EU directives:  
89/336/EEC, 73/23/EEC and 93/68/EEC directives.  
This declaration is valid for the area of the European Union.

This device must be used with shielded interface cables. The use of non-shielded cables is likely to result in interference with radio communications and is prohibited under EU directives.

## For Users of the Class B regulation's countries

This device must be used with shielded interface cables. The use of non-shielded cables is likely to result in interference with radio communications and is prohibited under CISPR 22 rules and local rules.

## For Users except the Class B regulation's countries

### **WARNING**

This is a Class A product. In a domestic environment this product may cause radio interference in which case the user may be required to take adequate measures.

This device must be used with shielded interface cables. The use of non-shielded cables is likely to result in interference with radio communications and is prohibited under CISPR 22 rules and local rules.

---

## Welcome

Congratulations on your selection of Minolta Pi3505e printer controller and Network Interface Card.

This User Manual explains how to run print cycles on the machine, to which the controller is connected. It also provides information about how to setup the Network Interface Card and operate the Digital Copier in a network environment. First read this manual carefully and thoroughly; then, keep it close at hand so you can refer to it whenever it becomes necessary.

Some of the screens shown in this manual may look different from what you will view in actual applications.

### Trademark Acknowledgements

Minolta is a registered trademark of MINOLTA CO., LTD. Page Scope and DiALTA are trademarks of MINOLTA CO., LTD.

Ethernet is a registered trademark of Xerox Corporation.

PCL is registered trademarks of Hewlett-Packard Company.

Microsoft, Windows, and Windows NT are registered trademarks of Microsoft Corporation.

Netscape Communications, the Netscape Communications logo, Netscape Navigator, Netscape Communicator, and Netscape are trademarks of Netscape Communications Corporation.

Novell and NetWare are registered trademarks of Novell, Inc.

This product uses Software Developer Kit of Peerless Systems Corporation.

Copyright © 2001 Peerless Systems Corporation. All rights reserved.

This product uses NEST Office SDK of Novell, Inc.

Copyright © 1999 Novell, Inc.

NEST is a trademark of Novell, Inc. in the United States and other countries.

All other product names are trademarks or registered trademarks of their respective holders.

Copyright 2003 MINOLTA CO., LTD.

The information contained in this manual is subject to change without notice.



# 1 Before Using the Printer Driver

## 1.1 Features of the Controller and Printer Driver

The controller is an image controller that makes it possible to use the machine as a printer. It makes it possible for you to print documents directly to the machine from a computer that is connected to the controller.

The printer driver includes various functions that make it possible to get the most out of the features of the machine. You can use the print driver to configure the settings of various machine functions on your computer screen.



### Note

*Make sure that the machine is On Line when you are using the controller.*

*Some functions of the machine, such as stapling and hole punching, cannot be used in combination. Other functions may not be available when printing on certain paper sizes. Any functions that are not currently disabled appear dimmed on the printer driver dialog box.*

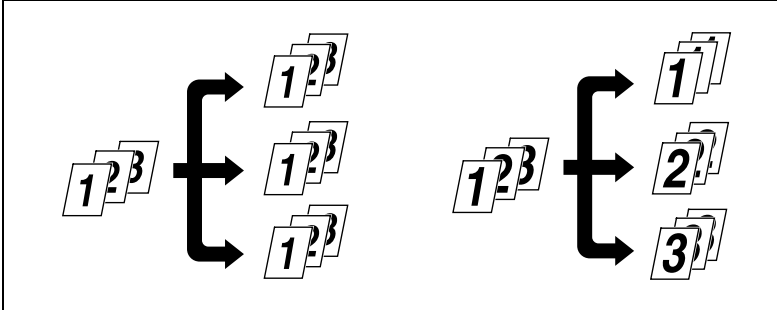
*Specifying functions that are not compatible with each other will display the **Conflicts** dialog box, which prompts you to change the settings. If this happens, check your settings and configure them so they are compatible.*

*Sometimes, the printer driver will allow you combine functions that are not allowed by the machine. Executing the print command while an illegal combination of machine functions is selected will cause the machine to produce incorrect output, or to print nothing. Always take care to configure settings correctly.*

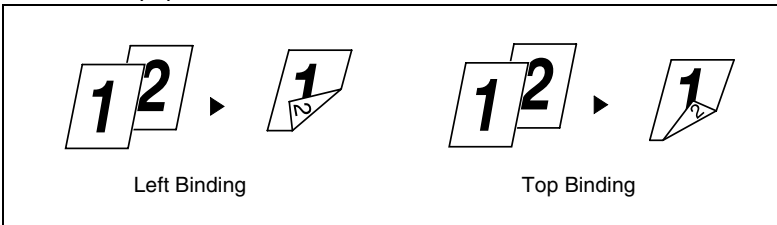


## 1.2 Various Printing Functions

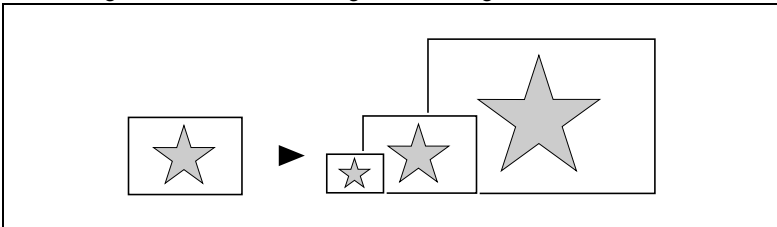
- Makes prints that are sorted into complete sets of the originals or grouped into uncollated groups, each containing prints of one original.



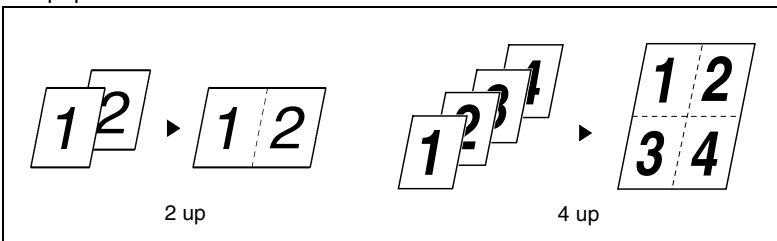
- Prints two pages of originals on both front and back sides of a single sheet of paper.



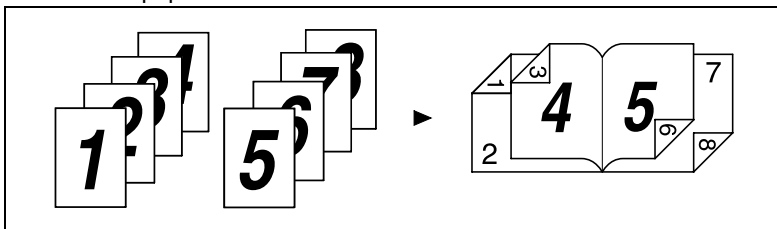
- Enlarges or reduces the image on the original.



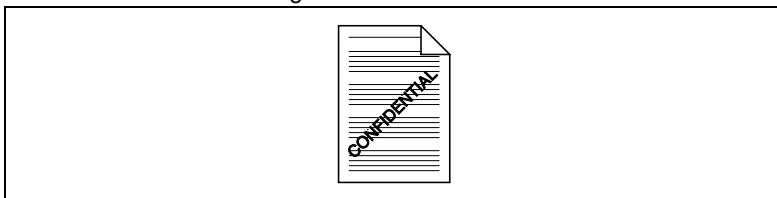
- Prints two pages or four pages of originals on a single sheet of paper. Maximum of 16 pages of originals can be printed on a single sheet of paper.



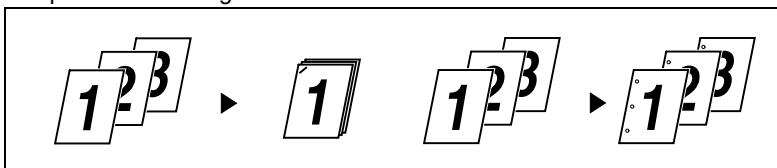
- Prints four pages of originals to both front and back sides of a single sheet of paper.



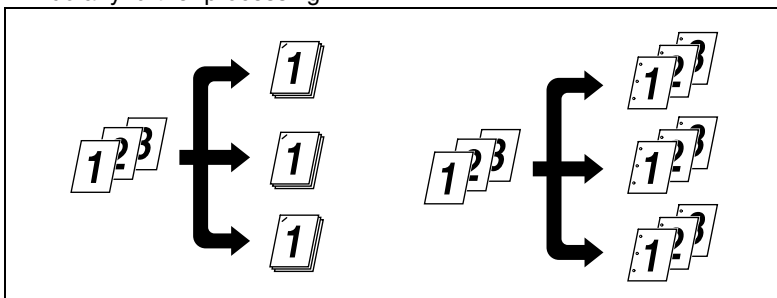
- Places text in the background.



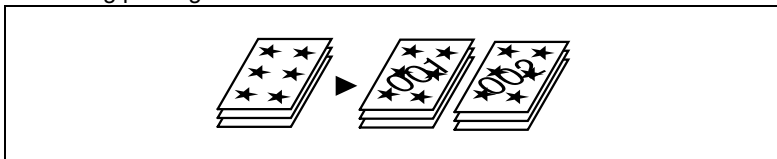
- Makes prints of complete sets of the originals, stapled together or punched for filing.



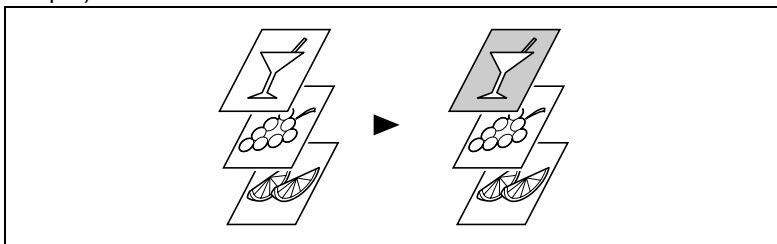
By combining Collate with other finishing capabilities, you can make complete sets of documents for immediate delivery without having to do any further processing.



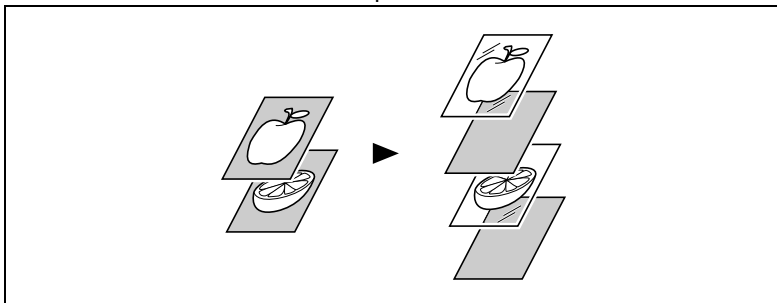
- Adds a reference number (Distribution Number) to each document set during printing.



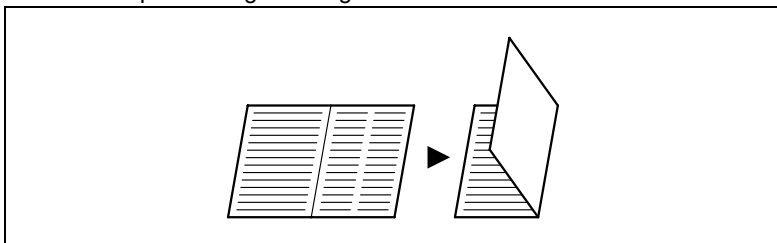
- Prints only the cover on a different type of paper (such as colored paper).



- Capable of printing on OHP transparencies. You can also insert interleaves blank on the OHP transparencies.



- Folds copies during finishing.

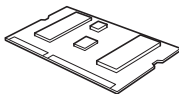


## 1.3 Configuration

The machine can be configured with the options described below.

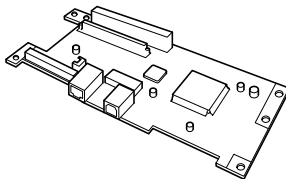
- DIMM

Makes it possible to use the machine as a PCL printer.



- Network Interface Card (Option)

Makes it possible to use the machine as a printer.

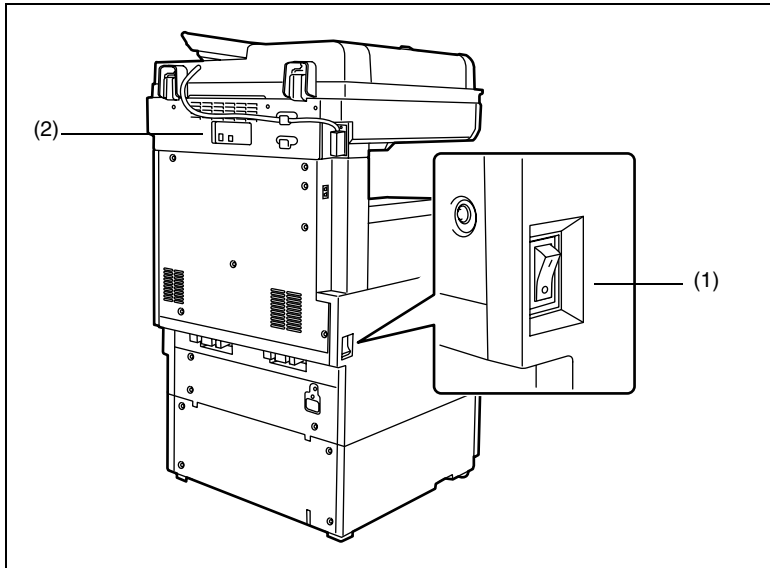


**Note**

*The Network Interface Card must be installed in order to use the scanner functions.*

## 1.4 General Guide

The following shows the name of each of the component parts of the machine.

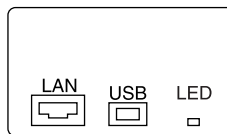


**(1) Power switch**

Turns the machine on and off. The power switch is located on the left side of the machine.

**(2) USB port/LAN cable port**

Use these ports to connect the machine to a computer. These ports are located on the back of the machine.



- Use the USB port when connecting the machine directly to a computer.
- Use the LAN cable port when connecting the machine as a network computer.

## LED indicators

The following displays the meanings of each LED color and status.

LED Color	Status	Meaning
Green	On	LAN connection is normal.
	Off	Power is turned off.
		LAN connection is not normal.
	Flashing	Data send or receive is in progress.
Red	On	100Mbps operation
	Off	10Mbps operation

## 1.5 Connecting the Machine to a Computer



### Important!

*Note the following precautions whenever turning off the machine.*

- Never turn off the machine when either of the following conditions exists.  
While the machine is performing some operation  
While there is print data stored in machine memory (Turning off power deletes data input from the computer.)
- After turning the machine off, wait for at least about 10 seconds before turning it back on again. Wait until the machine completes its power up routine before trying to print.

### Connecting directly to a computer with a USB cable

- 1 Find the machine's USB port.
  - The USB port is located on the back of the machine.
- 2 Plug one end of the USB cable into the machine's USB port.
- 3 Install a printer driver on your computer.
  - See "Installing a Windows Printer Driver" on page 2-1.
- 4 Connect the other end of the USB cable to the computer's USB port.
  - See the documentation that came with your computer for information about where its USB port is located.

**Important!**

*Make sure you install the printer driver before you connect the USB cable to the computer.*

**Connecting to a network with a LAN cable****Note**

*Use Fast Ethernet 100BASE-TX (Category 5) cable for a LAN connection.*

*To use the machine on a network, you also need to configure network settings for the machine and computer. For details, see “Network Settings” on page 3-1.*

- 1** Find the machine’s LAN port.
  - The LAN port is located on the back of the machine.
- 2** Plug one end of the LAN cable into the machine’s LAN port.
- 3** Plug the other end of the LAN cable into a LAN hub.

## 1.6 Settings Made on the Machine

The following functions must be configured using the machine's Utility Mode (Utility — User Set — User's Choice — 6/6 — Priority Device).

### Priority Device

Specify either copier or printer as the priority function of the machine.

- **Copier:** This setting specifies that the machine is used mainly as a copier. With this setting, the machine starts the print cycle only after it has received the all of data of a particular print job. The machine can be used for copying while it is receiving data, since it starts printing only after it has received all the data of the print job. With this setting, more time is available for copying, but print jobs take longer to print.
- **Printer:** This setting specifies that the machine is used mainly as a printer. With this setting, the machine starts printing as soon as it receives the data for one page of the print job. Once it starts printing, the machine will not accept any copy job. With this setting, less time is available for copying, but print jobs are performed more quickly.



## 1.7 Printer Drivers

Be sure to install one of the printer drivers that come bundled with the controller in order to get the most of the machine when the controller is installed. The controller comes bundled with the following types of printer drivers.

- PCL6 printer drivers
  - Windows 98/Me
  - Windows NT 4.0
  - Windows 2000/XP

Install the proper printer driver for the operating system that your computer is running. See the pages referenced below for more information about driver installation procedure.

To install a printer driver on a machine running this operating system:	See this page:
Windows 98 or Me	p. 2-1
Windows 2000 or XP	p. 2-4
Windows NT 4.0	p. 2-7

## 2 Installing a Windows Printer Driver

This chapter describes the procedures for installing a printer driver on a computer running Windows.

- **Windows 98/Me**  
For minimum system requirements and the installation procedure for Windows 98/Me printer drivers, see page 2-2.
- **Windows 2000/XP**  
For minimum system requirements and the installation procedure for a Windows 2000/XP printer driver, see page 2-4.
- **Windows NT 4.0**  
For minimum system requirements and the installation procedure for Windows NT 4.0 printer drivers, see page 2-7.

### 2.1 Windows 98 or Me

#### Operating Environment

This section explains the minimum computer system requirements for a Windows 98/Me printer driver. Before installing a printer driver, check to make sure that your computer conforms to the minimum requirements. If it doesn't, the printer driver may not function properly.

Personal computer		IBM PC or compatible with Pentium 200MHz or higher CPU
Operating system		Windows 98 (English) or Windows Me (English)
Memory		32MB or more
I/O interface	USB	Revision 1.1 compliant
	Network	10/100BaseT (UTP)
Free space on hard disk		10MB or more

## Installing a Windows 98/Me Printer Driver

Perform the steps below to install a Windows 98/Me printer driver.



### Note

*Before starting to install a printer driver, be sure first to quit all other applications.*



### Tip

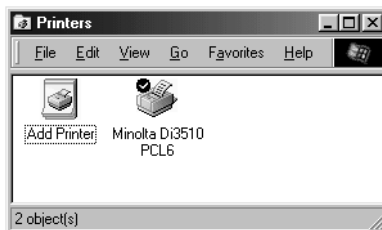
*The following sample procedure shows how to install the PCL6 printer driver. The text that appears on the screens will differ slightly when installing a different printer driver type.*

- 1 Click the **Start** button. On the menu that appears, point to **Settings** and then click **Printers**.
- 2 On the Printers window that appears, double-click the **Add Printer** icon.
- 3 The Add Printer Wizard screen will appear.



Follow the instructions that appears on your computer screen and make your choices. If you have problems during the installations, please refer to the User Manual in the CD-ROM that is included with the controller.

When all the files have been copied from the CD-ROM, the corresponding icon will be added to the Printers window.



This completes the installation.



### Note

*When installing the printer driver from a computer connected to the machine over a network, contact your network administrator.*

## Making General Settings Before Using the Printer

The printer driver requires setting of items that are common to all print jobs, including the port to which the printer cable is connected and optional devices configured with the machine. These settings must be made using properties dialog box available from the Properties command after the printer driver has been installed or whenever the operating environment is changed.

The most common settings were made when the printer driver was installed, meaning that you do not usually bother to change them. Some items must, however, be changed in the following cases.

Cases where changes are necessary	Applicable property tab
You want to add a comment to distinguish the printer from others	General
The computer's connecting port has been changed You want to change the conditions for the display of a timeout error You want to designate a port to which the machine is connected via a network (this setting must be made on a computer connected to the machine via a network)	Details
This setting is not related to printing.	Color Management
You want to share the machine with other computers connected to the same network (this setting must be made on the computer directly connected to the machine)	Sharing

For details of "Using PCL Printer Driver Properties Tabs" on page 4-1.

**Note**

*Refer to the User Manual on the controller CD-ROM for information about how to actually configure settings.*

## 2.2 Windows 2000/XP

### Operating Environment

This section explains the minimum computer system requirements for a Windows 2000/XP printer driver. Before installing a printer driver, check to make sure that your computer conforms to the minimum requirements. If it doesn't, the printer driver may not function properly.

Personal computer		IBM PC or compatible with Pentium 200MHz or higher CPU
Operating system		Windows 2000 (English) or Windows XP (English)
Memory		64MB or more (Windows 2000) 128MB or more (Windows XP)
I/O interface	USB	Revision 1.1 compliant
	Network	10/100BaseT (UTP)
Free space on hard disk		10MB or more

### Installing a Windows 2000/XP Printer Driver

Perform the steps below to install a Windows 2000/XP printer driver.

**Note**

*In order to install a printer driver, you must be logged into with administrator privileges.*

*Before starting to install a printer driver, be sure first to quit all other applications.*

**Tip**

*The following sample procedure shows how to install the PCL6 printer driver. The text that appears on the screens will differ slightly when installing a different type of driver.*

- 1 Click the **Start** button. On the menu that appears, point to **Settings** and then click **Printers**.
- 2 On the **Printers** window that appears, double-click the **Add Printer** icon.
- 3 On the **Add Printer Wizard** screen that appears, click the **Next** button.  
Follow the instructions that appears on your computer screen and make your choices. If you have problems during the installations, please refer to the User Manual in the CD-ROM that is included with the controller.

When all the files have been copied from the CD-ROM, the corresponding icon will be added to the Printers window.



This completes the installation.



#### **Note**

*When installing the printer driver from a computer connected to the machine over a network, contact your network administrator.*

### **Making General Settings Before Using the Printer**

The printer driver requires setting of items that are common to all print jobs, including the port to which the printer cable is connected and optional devices configured with the machine. These settings must be made using property sheets available from the Properties command after the printer driver has been installed or whenever the operating environment is changed.

The most common settings were made when the printer driver was installed, meaning that you do not usually bother to change them. Some items must, however, be changed in the following cases.

Cases where changes are necessary	Applicable property tab
You want to add a comment to distinguish the printer from others	General
You want to share the machine with other computers connected to the same network (this setting must be made on the computer directly connected to the machine)	Sharing
The computer's connecting port has been changed You want to change the conditions for the display of a timeout error You want to designate a port to which the machine is connected via a network (this setting must be made on a computer connected to the machine via a network)	Ports
You want to restrict use condition of printer. You want to change settings in spool condition. You want to change OS-dependent settings.	Advanced
This setting is not related to printing.	Color Management
You want to restrict access to the machine. You want to check the accounts of the machine users.	Security

For details of "Using PCL Printer Driver Properties Tabs" on page 4-1.



#### Note

*Refer to the User Manual on the controller CD-ROM for information about how to actually configure settings.*

## 2.3 Windows NT 4.0

### Operating Environment

This section explains the minimum computer system requirements for a Windows NT 4.0 printer driver. Before installing a printer driver, check to make sure that your computer conforms to the minimum requirements. If it doesn't, the printer driver may not function properly.

Personal computer		IBM PC or compatible with Pentium 200MHz or higher CPU
Operating system		Windows NT 4.0 (English) (Service Pack 6.0a)
Memory		64MB or more
I/O interface	Network	10/100BaseT (UTP)
Free space on hard disk		10MB or more

### Installing a Windows NT 4.0 Printer Driver

Perform the steps below to install a Windows NT 4.0 printer driver.



...

#### Note

*In order to install a printer driver, you must be logged into with administrator privileges.*

*Before starting to install a printer driver, be sure first to quit all other applications.*



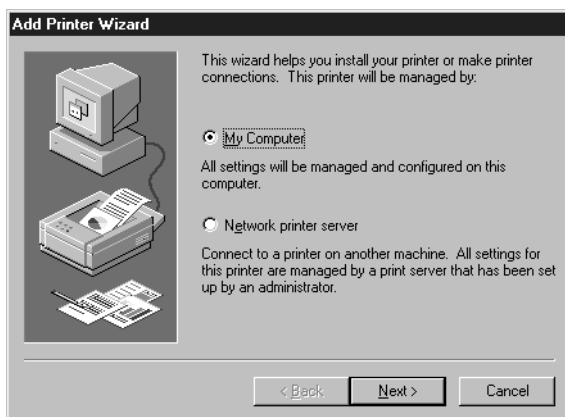
...

#### Tip

*The following sample procedure shows how to install the PCL6 printer driver. The text that appears on the screens will differ slightly when installing a different type of driver.*



- 1 Click the **Start** button. On the menu that appears, point to **Settings** and then click **Printers**.
- 2 On the **Printers** window that appears, double-click the **Add Printer** icon.
- 3 Start the **Add Printer Wizard**.



Follow the instructions that appears on your computer screen and make your choices. If you have problems during the installations, please refer to the User Manual in the CD-ROM that is included with the controller.

When all the files have been copied from the CD-ROM, the corresponding icon will be added to the Printers window.



This completes the installation.



**Note**

*Contact your network administrator if you are installing the printer driver from a computer that is connected to the machine via a network.*

**Making General Settings Before Using the Printer**

The printer driver requires setting of items that are common to all print jobs, including the port to which the printer cable is connected and optional devices configured with the machine. These settings must be made using property dialog box available from the Properties command after the printer driver has been installed or whenever the operating environment is changed.

The most common settings were made when the printer driver was installed, meaning that you do not usually bother to change them. Some items must, however, be changed in the following cases.

Cases where changes are necessary	Applicable property tab
You want to add a comment to distinguish the printer from others	General
The computer's connecting port has been changed You want to change the conditions for the display of a timeout error You want to designate a port to which the machine is connected via a network (this setting must be made on a computer connected to the machine via a network)	Ports
You want to specify a time frame for the machine operation	Scheduling
You want to share the machine with other computers connected to the same network (this setting must be made on the computer directly connected to the machine)	Sharing
You want to restrict access to the machine You want to check the accounts of the machine users	Security

For details of "Using PCL Printer Driver Properties Tabs" on page 4-1.



**Note**

*Refer to the User Manual on the controller CD-ROM for information about how to actually configure settings.*

## 2.4 Installation through Plug and Play

If the local connection (USB) is made between the PC and the copier, the printer driver can be installed through the “Plug and Play” function.

For details of how to install the printer driver, see “*Installing a Windows Printer Driver*” on page 2-1.

**Note**

*Windows NT 4.0 does not support “Plug and Play”.*

### Connecting the USB Cable

Windows 98 and 98SE:

Following the instructions given in the “Add New Hardware Wizard” that will be automatically started through Plug and Play, install the USB device driver and then install the printer driver.

- 1 Connect the USB cable to the copier and PC with the Power Switch ON.
- 2 The installation of the printer driver through Plug and Play is automatically started on the PC.
- 3 Install the USB device driver according as instructed by the “Add New Hardware Wizard”.

**Note**

*The USB device driver is stored in the printer driver CD-ROM.*

- 4 Following the instructions given in the “Add New Hardware Wizard” that will automatically appear after the USB device driver has been installed, install the printer driver.

Windows Me, 2000 and XP:

- 1 Connect the USB cable to the copier and PC with the Power Switch ON.
- 2 The installation of the printer driver through Plug and Play is automatically started on the PC.
- 3 Install the printer driver according as instructed by the “Add New Hardware Wizard”.

**Note**

*Windows NT 4.0 does not support USB.*

## 2.5 Uninstalling a Windows Printer Driver

- 1 Click the **Start** button, point to **Settings**, and then click **Printers**.
- 2 Click the icon of the printer to be deleted.
- 3 Press the [Delete] key to delete the driver.
- 4 When the uninstalling procedure is completed, the printer icon disappears from the Printers window.

This completes the uninstalling procedure.



## 3 Network Settings

### 3.1 Introduction

This chapter consists of the sections listed below.

**(1) Specifying the IP address from the copier's touch panel**

**(2) Using the printing functions**

Windows 98/Me

- Peer-to-peer printing  
Refer to the PageScope Network Setup User Manual for details.
- Windows printing  
See *"Windows Printing" on page 3-9.*

Windows NT 4.0

- LPR printing  
See *"LPR Printing" on page 3-5.*
- Windows printing  
See *"Windows Printing" on page 3-9.*

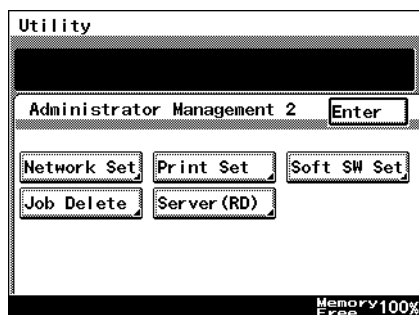
Windows 2000/XP

- LPR printing  
See *"LPR Printing" on page 3-5.*
- Windows printing  
See *"Windows Printing" on page 3-9.*
- IPP printing  
See *"IPP Printing" on page 3-9.*

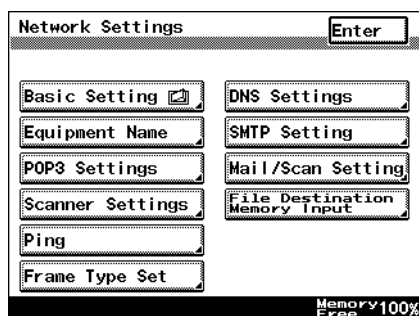
## 3.2 Specifying the IP Address From the Copier's Touch Panel

### Setting procedure

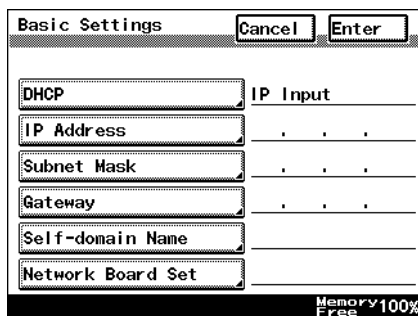
- 1 Press the [Utility] key.
- 2 Touch [Admin. Management] and input the Administrator code.
- 3 Touch [Admin. 2].
- 4 Touch [Network Set].



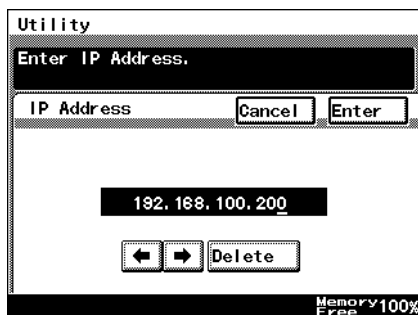
- 5 Touch [Basic Setting].



6 Touch [IP Address].



7 With the keypad in the operation panel, type in the IP address, and then touch [Enter].



8 Touch [Subnet Mask].

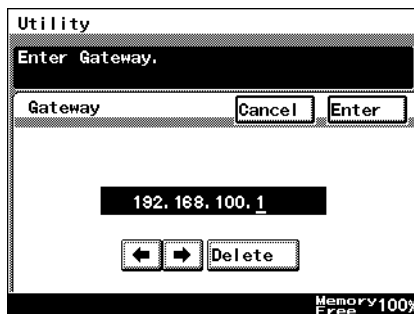
9 With the keypad in the operation panel, type in the subnet mask, and then touch [Enter].





**10** Touch [Gateway].

**11** With the keypad in the operation panel, type in the default gateway, and then touch [Enter].



**12** In order to activate the address settings, turn the printer off, then on again.

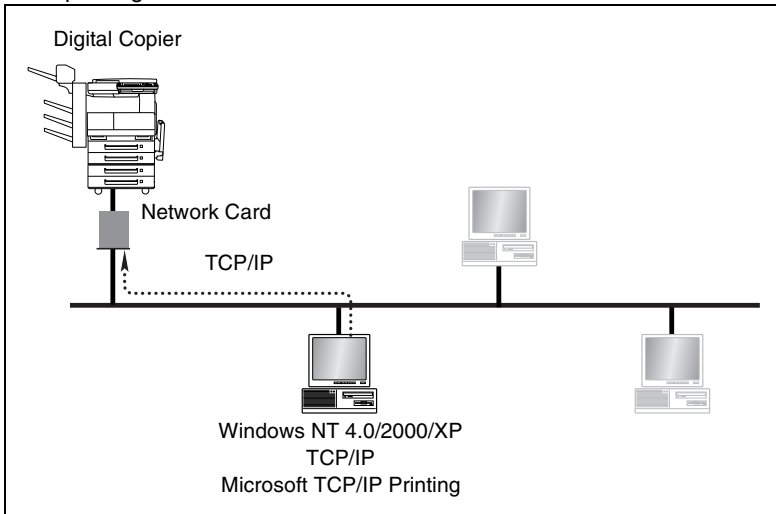
### 3.3 Peer-to-Peer Printing

When you want to print directly to a network printer from Windows 98/Me without going through the server, install PageScope Network Setup from the PageScope CD (for administrators), and configure the Peer-to-Peer print setup.

See “5 Peer-to-Peer Print Setup” in the PageScope Network Setup User Manual for details.

### 3.4 LPR Printing

This section explains how to use the Windows NT 4.0/2000/XP standard LPR printing function.



#### Requirements

- Computer must have TCP/IP installed and enabled.
- Network Card must have valid IP parameters assigned.

#### Configuration Procedure (Windows NT 4.0)

- 1 Install TCP/IP and Microsoft TCP/IP Printing service under Windows NT.
  - Click the **Start** button, point to **Control Panel**, and then click **Network**. Click the **Services** tab, click the **Add** button, and install the Microsoft TCP/IP print service.
- 2 Assign the IP parameters.
  - See *"Specifying the IP Address From the Copier's Touch Panel"* on page 3-2 for more information.
- 3 Use the procedure below to install the printer.

## Installing the printer (Windows NT 4.0)

- 1 On the **Start** menu, point to **Settings** and then click **Printers**.
- 2 Double-click **Add Printer** and install the printer. Make the new printer the default printer.
  - See *“Installing a Windows Printer Driver” on page 2-1* for details about how to install it.
- 3 Right-click the new printer icon and select **Properties** from the menu.
- 4 Display the **Ports** tab.
- 5 Click **Add Port**.

This displays a list of enabled port types.
- 6 Select **LPR Port** and then click **New Port**.
- 7 On the Add LPR compatible printer dialog box, type the IP address of the Network Card into the **Name or address of server providing lpd** box.
  - If the network you are on uses DNS (Domain Name Services), type in the DNS name instead of the IP address.
- 8 Type **print** into the **Name of printer or print queue on that server** box, and then click **OK** to close the dialog box.
- 9 Click the **Close** button of the Printer Ports dialog box, and then click the **OK** button of the **Properties** dialog box to close it.
- 10 Right-click the printer icon again to display its Properties dialog box, display the **General** tab, and then print a test page.
- 11 If the test prints normally, complete the procedure by clicking **OK** to close the Properties dialog box.

After you finish installing a printer with the above procedure, you can use it just as you would any standard local printer. The printer can also be used as a network printer by other Windows computers on your network whose Windows NT 4.0 systems are configured the same way as described above.

### Configuration Procedure (Windows 2000/XP)

- 1 Install TCP/IP under Windows 2000/XP.
  - Refer to the applicable Windows documentation for more information.
- 2 Assign the IP parameters.
  - See “*Specifying the IP Address From the Copier’s Touch Panel*” on page 3-2 for more information.
- 3 Use the procedure below to install the printer.

### Installing the printer (Windows 2000/XP)

- 1 Install the printer driver following the instructions that come with the installer. Make the new printer the default printer.
- 2 Right-click the new printer icon and select **Properties** from the menu.
- 3 Display the **Ports** tab.
- 4 Click **Add Port**.

This displays a list of available port types.
- 5 Select **Standard TCP/IP Port** from the list, and then click **New Port**.

This starts **Add Standard TCP/IP Printer Port Wizard**.
- 6 Click **Next** on the introduction page of the wizard.
- 7 On the **Add Port** page, type the IP address of the Network Card into the **Printer Name or IP Address** box.
  - If the network you are on uses DNS (Domain Name Services), type in the DNS name instead of the IP address.
- 8 Type the name of the port you want into the **Port Name** box, and then click **Next**.



#### Note

*When you type the IP address into the **Printer Name or IP Address** box, the name of the port is automatically entered in the **Port Name** box as **IP\_<IP address>**, but you can change the port name as you want.*

- 9 On the **Additional Port Information Required** page, select **Custom**, and then click **Settings**.
- 10 On the Configure Standard TCP/IP Port Monitor dialog box, select **LPR** from the **LPR Settings** box.
- 11 Type **print** in the name of the queue you want into the **Queue Name** box.
- 12 Click **OK** to return to the **Additional Port Information Required** page.
- 13 Click **Next** to display the next wizard page, and then click **Finish**.
- 14 Click the **Close** button of the Printer Ports dialog box, and then click the **Apply** button of the Properties dialog box.
- 15 Display the **General** tab, and then print a test page.
- 16 If the test prints normally, complete the procedure by clicking **OK** to close the Properties dialog box.

After you finish installing a printer with the above procedure, you can use it just as you would any standard local printer. The printer can also be used as a network printer by other Windows computers on your network whose Windows 2000/XP systems are configured the same way as described above.

## 3.5 Windows Printing

This section explains how to use Windows Printing Service for direct printing on a Microsoft network.

### Requirements

- Computer must have NetBEUI protocol installed.

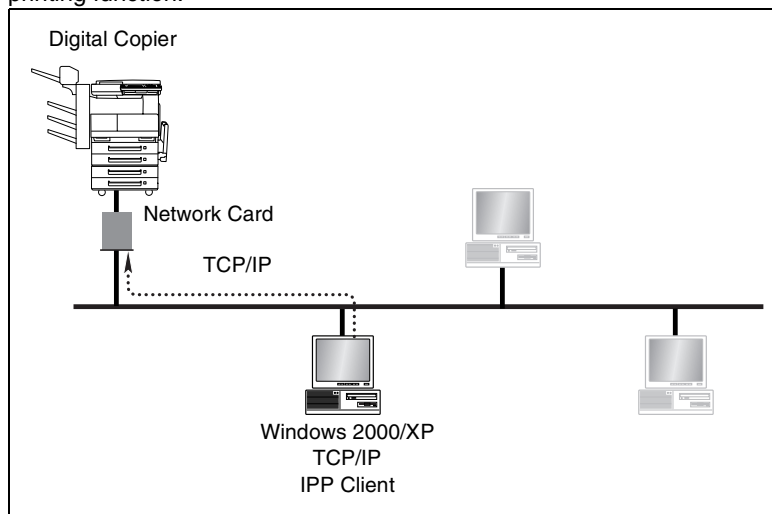


#### Note

*Refer to the User Manual on the controller CD-ROM for details.*

## 3.6 IPP Printing

This section explains how to use the Windows 2000/XP standard IPP printing function.



### Requirements

- Computer must have TCP/IP installed and enabled.
- Network Card must have valid IP parameters assigned.



#### Note

*Refer to the User Manual on the controller CD-ROM for details.*

## 3.7 NetWare Printing

This section explains how to print with NetWare.

### Configuring Print Settings on a PC Used for Printing

The controller supports the system environment described below.

NetWare Version	Protocol	Emulation	Service Mode
NetWare 4.x	IPX	NDS	Pserver/Nprinter
NetWare 5.x NetWare 6	IPX	NDS	Pserver
	TCP/IP		NDPS(lpr)

**Note**

*Refer to the User Manual on the controller CD-ROM for details.*

## 3.8 Using PageScope Light

PageScope Light is a device manager utility provided by the HTTP server built into the printer/scanner controller. It lets you use a Web browser for remote control of the printer/scanner controller on a network.

You can register an index or one-touch key, configure network settings, and perform other tasks from PageScope Light.

### Accessing PageScope Light

You can use a Web browser to access PageScope Light.



#### Note

*The machine needs to have an IP address assigned to it before you can use PageScope Light. See page 3-2 for more information.*

- 1 Start up your Web browser.
- 2 Use the following format to input the IP address of the machine into the browser's address bar, and then click **Enter**.

`http://<controller IP address>/`

Example: When the IP address of your machine is 192.168.0.10

`http://192.168.0.10/`

- 3 The PageScope Light initial screen appears.

### Example: With Internet Explorer 6

- 1 Click **Tools** in the menu bar, and then click **Internet Options....**
- 2 Click the **Connections** tab.
- 3 Click the **LAN Settings** button.
- 4 Click the **Advanced** button in the "Proxy server" group box.
- 5 Type the IP address of the printer/scanner controller into the "Exceptions" list box.

### Using PageScope Light

PageScope Light works like an Internet Web page.

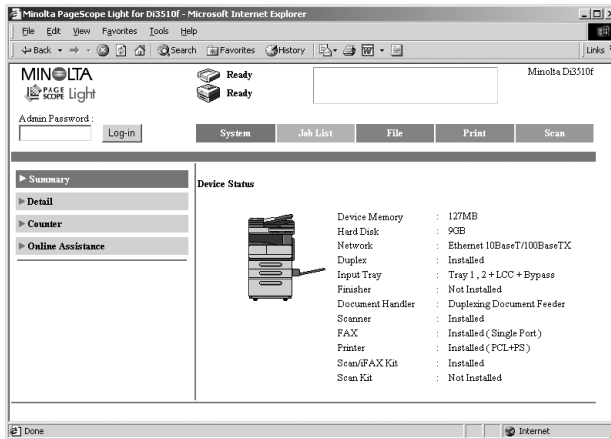
Clicking a hot link jumps to the link destination, and the **Back** and **Forward** buttons scroll through pages backwards and forward.



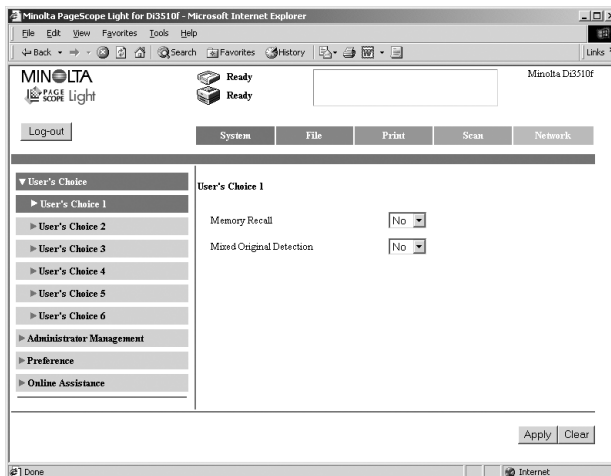
## Logging in to the Admin mode

After you log in to PageScope Light in the Admin mode, you can configure and check printer/scanner controller system settings.

- 1 Type the administrator password into the **Admin Password** box.
- 2 Click **Log In** to log in to the Admin Mode.



- 3 When you want to log out, click the **Log-out** button.



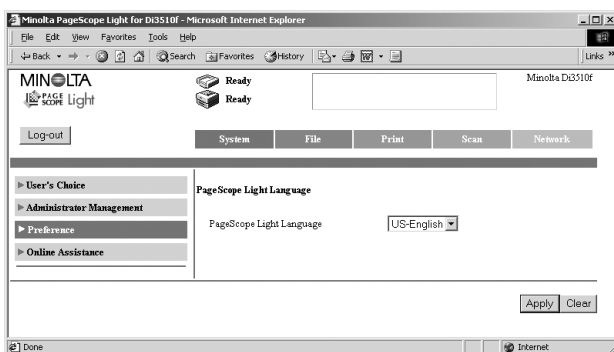
- Use the same password as the admin password of the machine. Contact your machine administrator for more information.
- PageScope Light automatically logs out of the Admin mode if no operation is performed for about 10 minutes.

- All operations on the machine's control panel are disabled while anyone is logged in to the PageScope Light Admin mode.

### Selecting the display language

Use the following procedure to specify the display language of PageScope Light. This setting is valid for PageScope Light displays only.

- 1 Log in to the Admin mode.
- 2 On the **System** tab, click the **Browser Settings** menu.
- 3 Use the **PageScope Light Language** setting to select the language you want.
- 4 Click the **Apply** button.



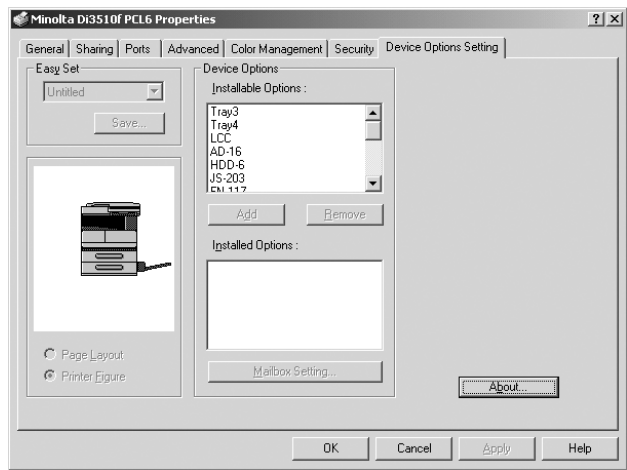


# 4 Configuring PCL Printer Driver Properties for Windows

The chapter provides detailed explanations of all the settings that appear on the tabs that are used to configure PCL printer driver properties. Note that some of the tabs described here appear on both the printer preferences dialog box and the printing preferences dialog box, while some tabs appear on one dialog box or the other.

## 4.1 Using PCL Printer Driver Properties Tabs

The following table explains which tab you should select to perform specific tasks. For a detailed description of all the settings on a tab, go to the indicated reference page.



When you want to do this:	Select this tab:
<ul style="list-style-type: none"><li>Specify what options are installed on the machine</li><li>Configure mailbin settings (when the Mail Bin Kit option is installed)</li></ul>	Device Options
<ul style="list-style-type: none"><li>Specify the paper input source and output tray</li><li>Configure advanced printer functions such as: two-sided printing, booklet creation, N-up printing, OHP interleaving, watermark, cover mode, stapling, punching, and folding</li></ul>	Setup
<ul style="list-style-type: none"><li>Configure basic printer settings such as: number of copies, original document size, output paper size, print orientation, collation, and print zoom ratio</li></ul>	Paper

When you want to do this:	Select this tab:
<ul style="list-style-type: none"><li>Specify the resolution</li></ul>	Quality
<ul style="list-style-type: none"><li>Configure settings for tracking print jobs</li><li>Lock a print job</li></ul>	Job Management
<ul style="list-style-type: none"><li>Configure settings for using a watermark</li></ul>	Overlay



...

**Note**

*See Chapter 2 for information about how to display printer driver properties.*

*Note that the actual printer driver settings that can be configured depends on the printer driver you are using.*

## 5 Troubleshooting

### 5.1 Unable to Print

This chapter explains the troubleshooting procedures for possible malfunctions. Perform the troubleshooting procedures given below when the copier is unable to print even if you execute a print command from your PC.

Symptom	Possible Cause	Action
A message appears on the PC screen, saying something to the effect that "no printers are connected", "no paper is loaded", or "LPT1 write error".	An error is probably present in the copier.	Check the control panel of the copier.
	The printer cable or network cable is disconnected.	Check that the printer cable or network cable is connected properly to the PC and controller.
Printing does not start despite the completion of printing setup on the PC.	An error is probably present in the copier.	Check the control panel of the copier.
	The printer cable or network cable is disconnected.	Check that the printer cable or network cable is connected properly to the PC and controller.
	The printer driver selected for printing is not compatible with the controller.	Check the printer name selected in the "Print" dialog box.
	A print job yet to be processed is loaded in the copier, causing the printer to wait.	Check with the job list on the copier control panel to check for print order.
Continuation from previous page (Printing does not start despite the completion of printing setup on the PC.)	The print job is locked.	Check with the job list on the copier control panel to see if the print job in question is locked. If so, unlock it.
	The connection of the controller to the network is yet to be established.	Consult the network administrator.
	If the copy track function is active, an illegal access number might have been entered.	Enter the correct access number.

If the problem persists after all these procedures have been performed, read the User Manual of the copier.

## 5.2 Unable to Make Correct Settings / Unable to Print Exactly as Set

Perform these troubleshooting procedures if you cannot make proper settings in the print driver or when the print results do not represent what has been set.



### Note

*Some of the printer driver functions cannot be combined with another.*

Symptom	Possible Cause	Action
Unable to select an item in the printer driver.	Some functions cannot be combined.	Do not select items that are dimmed.
The "Conflicts" dialog box is displayed on the PC screen.	An illegal combination of functions has been made.	Check for combination and make a correct combination of functions.
Unable to print exactly as set.	Incorrect settings are made.	Check the setting for each item of the printer driver.
	The combination of the functions, though valid on the printer driver, is invalid on the copier.	
	The paper size, paper direction, and other settings made on the application takes precedence over those made in the printer driver.	Make correct settings on the application.
The watermark cannot be printed.	The watermark is not correctly set.	Check the watermark setting.
	The watermark density is set to a low level.	Check the "Shading" setting.
	Watermark may not be printed in graphics applications.	No watermark can be printed in this case.
Unable to specify Staple.	No staple can be made if Media Type is Thick, Transparency or Envelope.	Check the setting for each item of the printer driver.
Unable to staple.	The number of prints to be stapled (with FN-117 mounted): Up to 50 prints.	Change the Copies setting.
	The number of prints to be center stapled (with FN-117 and SK-1): Up to 2 to 15 prints.	
	No stapling can be effected if the document contains pages of different sizes.	Check the document.
The stapling position is not what is expected.	Orientation setting is wrong.	Check the stapling position on "Page Layout" of a printer driver property sheet.

Symptom	Possible Cause	Action
Unable to specify Punch.	Hole Punch cannot be specified together with Booklet, OHP or Envelope.	Check the setting for each item of the printer driver.
Unable to effect Punch.	Printed pages can at times be fed out without being punched if the direction of the paper loaded in the paper source is not correct.	Check the setting for Orientation.
The hole punch position is not what is expected.	Orientation setting is not correct.	Check the punch position on "Page Layout" of a printer driver property sheet.
Unable to specify Folding.	FN-117 and SK-1 is necessary for Folding. FN-117 and SK-1 must be selected on "Device Option".	Specify FN-117 and SK-1 for "Device Option".
	Folding cannot be specified together with OHP, Thick or Envelope.	Check the setting for each item of the printer driver.
Unable to print image properly.	Memory space available is not sufficient.	Simplify the image to reduce the volume of data manipulated.
Paper is not fed from the specified paper source.	Paper will not be fed from the specified paper source if that paper source is loaded with paper of a different size and direction.	Load the paper source with paper of the appropriate size and in the appropriate direction.







**Copyright  
2003 MINOLTA CO., LTD.**

The information contained in this manual  
is subject to change without notice to  
incorporate improvements made on the  
product or products the manual covers.